



## Landscape Drip Specification and Installation Guide



Install Confidence.  
Install **Rain Bird**.



# TABLE OF CONTENTS

LANDSCAPE DRIP SPECIFICATION AND INSTALLATION GUIDE.....	4
<b>APPLICATIONS</b> .....	5
<b>SLOPES</b> .....	6
<b>PARKING LOT/STREET MEDIAN</b> .....	8
<b>PARKING LOT</b> .....	10
<b>NARROW PLANTING BEDS</b> .....	12
<b>POTS/BASKETS/MISC.</b> .....	14
<b>ANATOMY OF A RAIN BIRD LOW VOLUME IRRIGATION SYSTEM</b> .....	16
<b>LOW VOLUME PRODUCTS</b> .....	17
XCZ-075 PRF, XCZ-100-PRF .....	18
LOW FLOW VALVE .....	19
PRESSURE-REGULATING FILTER .....	20
BASKET FILTER .....	20
PSI-M20 PSI-M25 Pressure Regulators .....	21
EMT-6X 6 Outlet Manifold .....	21
1800™ Retrofit Kit For 1800™ Spray Heads .....	21
1800™ Xeri-Caps™ Caps for Spray Heads .....	21
RAIN BIRD DRIPLINE SERIES .....	22
MDCF SERIES .....	23
AIR/VACUUM RELIEF VALVE .....	23
RAIN BIRD XB PC SERIES .....	24
XB-10-6 .....	24
SXB-180, SXB-360 SERIES .....	24
VARI-JET SERIES .....	25
XS-90, XS-180, XS-360 SERIES .....	25
SXB-360-SPYK .....	25
XS-360TS-SPYK .....	25
SERIE BF-62, BF-72, BF-82 .....	26
XBV-075 .....	26
HOLE PUNCH .....	26
XM-TOOL .....	26
PPC-200X .....	26
700-CF-22 .....	27
BF-52 .....	27
BF-32-16, BF-32-12 SERIES .....	27
C-12 .....	27
END PLUG .....	27
R-34 SERIES .....	27
CLAMP .....	27
SPB-025 .....	28
TS-025 .....	28
DBC-025 .....	28
DT-025-50 / DT-025-1000 .....	28
EMA-GPX .....	28
PFR/RS .....	28
BF-1, BF-2, BF-3 .....	28
RWS SERIES .....	29
RB-IS SERIES .....	30
<b>230 CONTROLLERS</b> .....	31
230V CONTROLLER SELECTION GUIDE .....	32
<b>BATTERY-POWERED CONTROLLERS</b> .....	33
BATTERY-POWERED CONTROLLER SELECTION GUIDE .....	34

## LANDSCAPE DRIP SPECIFICATION AND INSTALLATION GUIDE

### What is drip irrigation?

*Drip irrigation delivers water slowly at or near the root zone of Landscape planting materials.*

### Why use drip irrigation?

- Prevents over spray and run off
- Conserves water
- Reduces weed growth
- Drip irrigation allows design flexibility

### How is drip irrigation different from conventional irrigation?

- Irrigation device flow rates are measured in l/h (liters per hour) rather than m<sup>3</sup>/H (cubic meters per hour)
- Operating pressures are typically between 1,0 to 3,5 bar
- Water is typically filtered from 75 to 120 micron

### Where should use drip?

- Dense, sparse or combination plantings
- Narrow planting beds
- High traffic areas
- Medians, slopes or walls

### What does it take to be successful when using drip irrigation?

- Use pressure regulation
- Filter the water to prevent clogging
- Consider the plant materials and soil type
- Flush the system periodically
- Specify efficient drip irrigation products

### How to use the Landscape Drip Specification and Installation Guide

1. Determine what your site will look like.
  - Slopes
  - Parking Lots/Street medians
  - Narrow Planting Beds
  - Pots/Baskets/Misc
2. Review the advantages to support your bid package.
3. Read through the "Bid Estimate Guide" making note of the approximate time for key steps and review the material list for key products.\*
4. Develop your material list and bid package.
5. Refer to facing page as a guideline for product placement. Always consider the individual plant material when selecting the emission device.
6. For questions call Rain Bird Technical Services at (33) 4 42 24 44 61 or visit the website at [www.rainbird.fr](http://www.rainbird.fr).

\* Note: Times shown represent approximate time in average environmental conditions and medium soil type. For extreme weather conditions and soil types such as caliche or compacted clays you must adjust the time factor. Time factor will vary based on experience and number of crew.



## ***APPLICATIONS***



## SLOPES

### Highway Embankment *Dense Applications*

#### SOLUTION

Landscape Dripline Grid with XB Drip Emitters

#### ADVANTAGES

- *Up to 60% water savings due to zero wind loss*
- *Low maintenance results in labor savings*
- *Supplemental XB Drip Emitters are placed next to larger plants with higher water requirements*
- *No run off = reduced liability in high traffic areas*

## INSTALLATION

### MATERIALS LIST:

- ☑ DP162233XXX Landscape Dripline 2,2 l/h and 33 cm spacing
- ☑ XCZ-100-PRF 1" Xeri Control Zone Kit
- ☑ AR VALVE KIT Air Relief Valve Kit
- ☑ MDCF Series Easy Fit Compression Fittings/Adapters
- ☑ XB XX Pressure Compensating Drip Emitters (2 to 8 l/h)
- ☑ DT-025 1/4" Distribution Tubing
- ☑ TS-025 1/4" Tubing Stake
- ☑ C-12 Tie Down Stake
- ☑ XM Tool XM Installation Tool
- ☑ DBC-025 Diffuser Bug Cap



LANDSCAPE DRIPLINE



AIR RELIEF VALVE KIT



XB



EASY FIT COMPRESSION FITTINGS/ADAPTERS

### BID ESTIMATE GUIDE:

Description	Time (Approx.)
• Assemble Control Zone Kit and connect to water source.	1 hr
• Connect Easy Fit Adapter to Easy Fit Tee for connection to Control Zone Kit.	5 min
• Cut lengths of Landscape Dripline to build grid in planting area.	10 min/15 m
• Connect lengths of Landscape Dripline to Easy Fit Fittings to create grid. Add Air Relief Valve Kit to the zone.	25 min/15 m
• Staple Landscape Dripline grid in place and flush for 2 minutes.	5 min/3 m
• Insert XB Emitters into Landscape Dripline for supplemental watering at larger plants.	3 min/Emitter
• Install planting material.	

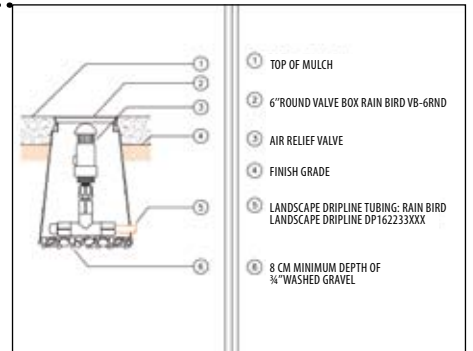
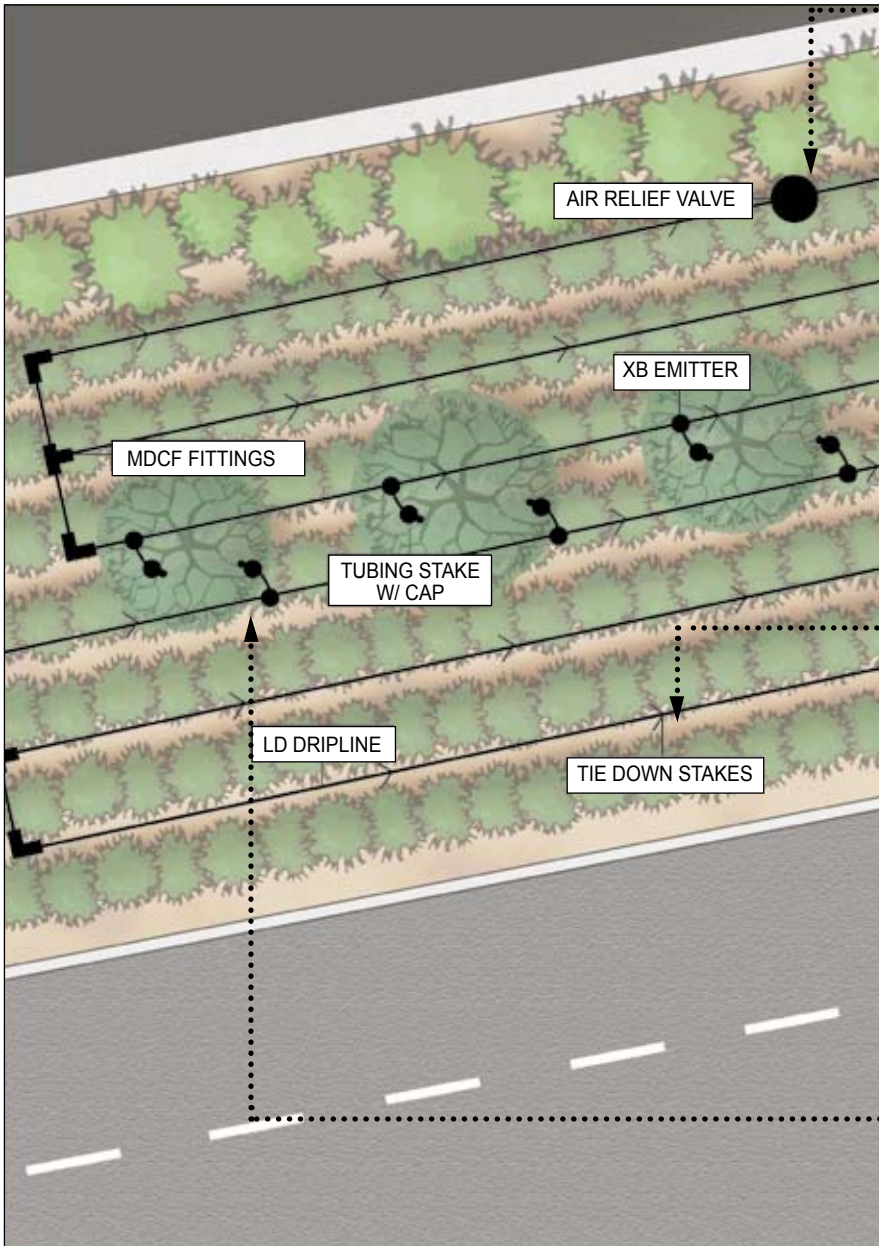
### INSTALLATION AND MAINTENANCE TIPS:

- Leave Landscape Dripline coil in the sun while preparing for installation.
- Install AR Valve Kit at high point in the system.
- Use XM Tool to install XB Emitters into Landscape Dripline.
- Flush the zone upon installation and once a year.

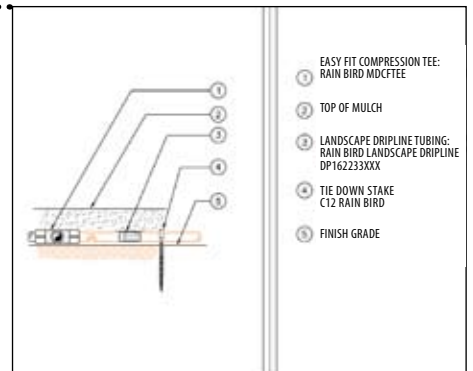
# Highway Embankment

Dense Applications

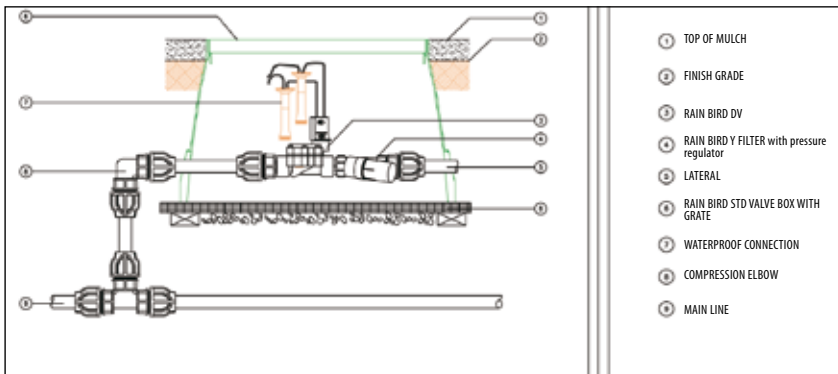
## CONTRACTOR PLAN AND INSTALLATION DETAILS



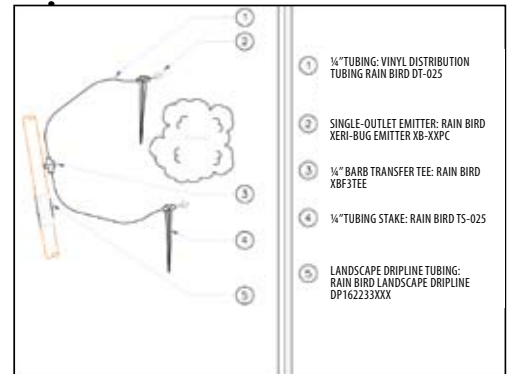
Air Relief Valve Kit



Landscape Dripline on Grade



Medium Flow Control Zone Kit  
XCZ-100-PRF



Landscape Dripline with Supplemental Emitters



## PARKING LOT/STREET MEDIAN

### Narrow Planting Bed/Divider

*Combination Applications*

#### SOLUTION

**Landscape Dripline Grid with  
XB Drip Emitters**

#### ADVANTAGES

- *Up to 60% water savings due to zero wind loss.*
- *No over spray damage to vehicles or parking lot.*
- *Supplemental XB Drip Emitters are placed next to larger plants with higher water requirements.*
- *Landscape Dripline is easy to install for labor savings.*

## INSTALLATION

### MATERIALS LIST:

- DP162233XXX Landscape Dripline 2,2 l/h and 33 cm spacing
- X CZ-075-PRF 3/4" Xeri Control Zone Kit
- MDCF Series Easy Fit Compression Fittings/Adapters
- C-12 Tie Down Stake
- XB XX Pressure Compensating Drip Emitters (2 to 8 l/h)
- DT-025 1/4" Distribution Tubing
- TS-025 1/4" Tubing Stake
- DBC-025 Diffuser Bug Cap



LANDSCAPE DRIPLINE



X CZ-075-PRF



EASY FIT COMPRESSION FITTINGS/ADAPTERS

### BID ESTIMATE GUIDE:

#### Description

- Assemble Control Zone Kit and connect to water source.
- Connect Easy Fit Adapter to Easy Fit Tee for connection to Control Zone Kit.
- Cut lengths of Landscape Dripline to build grid in planting area.
- Connect lengths of Landscape Dripline to Easy Fit Fittings to create grid.
- Staple Landscape Dripline grid in place.
- Punch self-piercing barb inlet of XB Drip Emitters into Landscape Dripline, connect 1/4" tubing to barb outlet and run 1/4" tubing to larger plant.
- Stake tubing in place and attach bug cap on the end.
- Flush system for approximately 2 minutes.
- Install planting material.

#### Time (Approx.)

- 30 min
- 5 min
- 10 min/15 m
- 20 min/15 m
- 5 min/3 m
- 5 min/Emitter
- 5 min/Stake
- 2 min

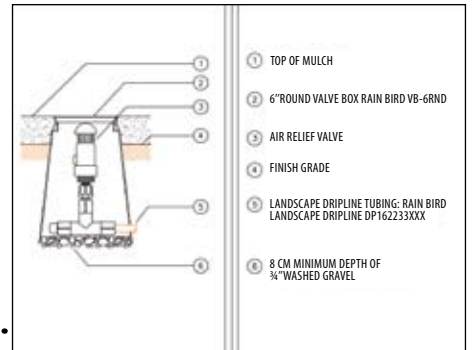
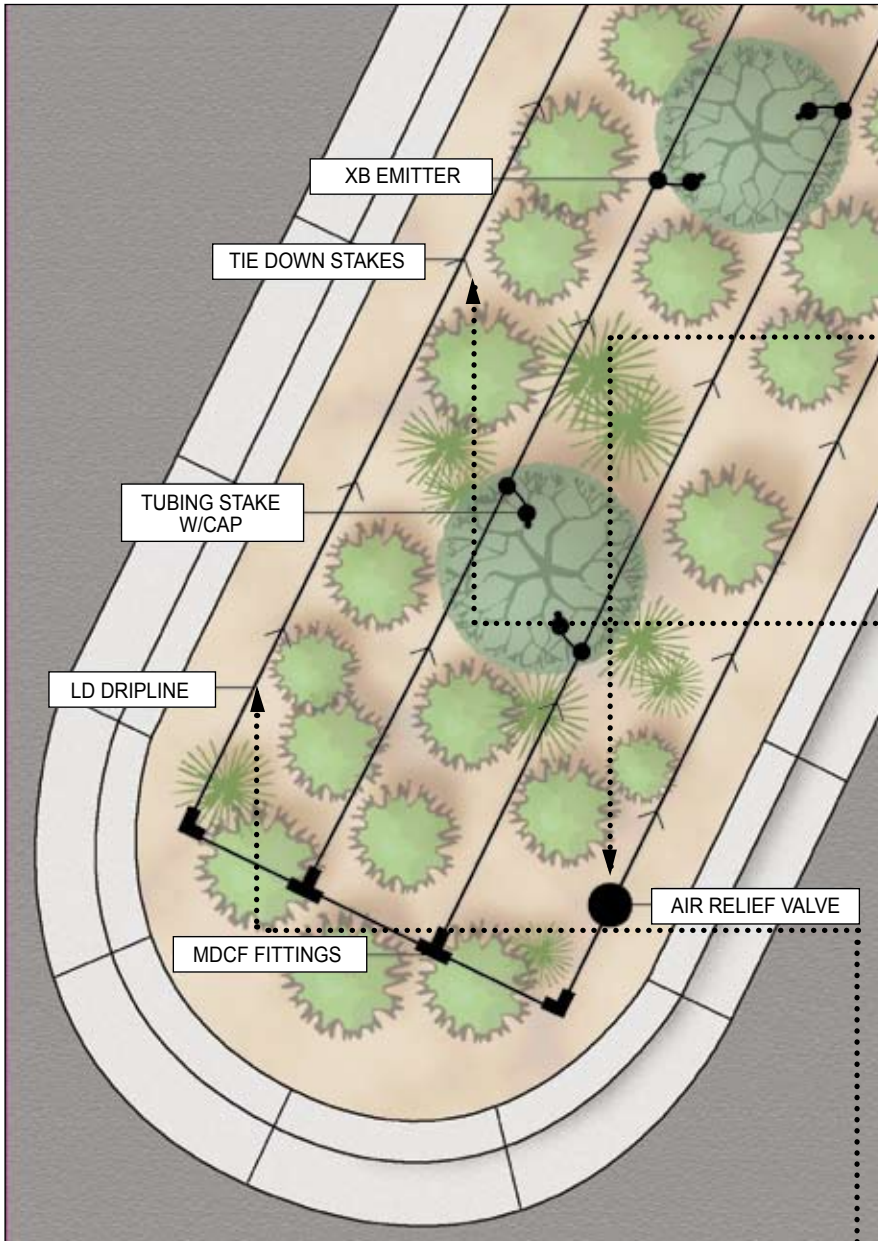
### INSTALLATION AND MAINTENANCE TIPS:

- Leave Landscape Dripline coil in the sun while preparing for installation.
- Install XB Drip Emitters with XM Tool for 50% faster installation.
- Flush the zone upon installation and once a year.

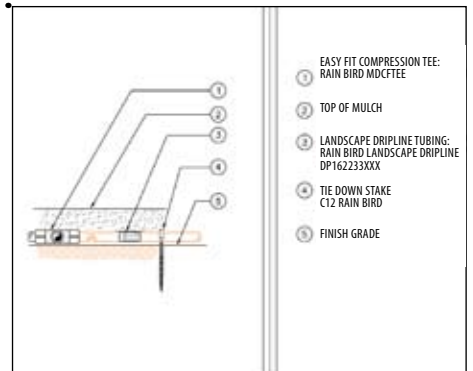
# Narrow Planting Bed/Divider

Combination Applications

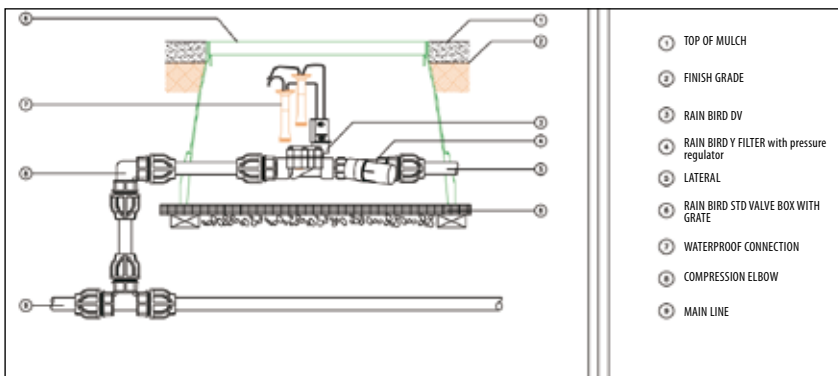
## CONTRACTOR PLAN AND INSTALLATION DETAILS



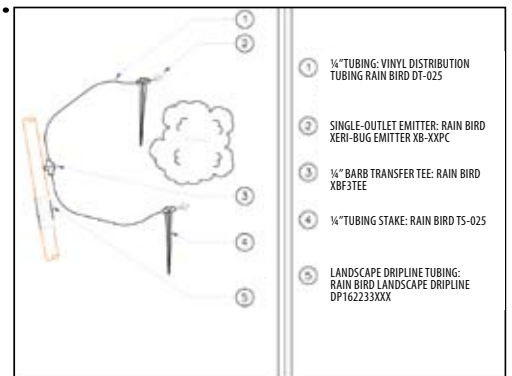
Air Relief Valve Kit



Landscape Dripline on Grade



Medium Flow Control Zone Kit  
XCZ-100



Landscape Dripline with Supplemental Emitters



## PARKING LOT

### Young trees and shrubs in planter bed

*Sparse Applications*

#### SOLUTION

**Standard, Mini and Shrub Root Watering Systems (RWS)**

#### ADVANTAGES

- *Enables vital water, air and nutrients to bypass compacted soil and directly reach tree and shrub root systems. It results in healthier trees and shrubs.*
- *Easy-to-install and labor savings.*
- *Water savings due to zero wind loss.*
- *No over spray damage to vehicles or parking lot.*
- *Ideal for urban settings: subterranean watering encourages roots to remain below surface and tree roots are less prone to damage.*

## INSTALLATION

### MATERIALS LIST:

- RWS-BGX      Standard RWS (standard size)
- RWS-M-BG      RWS-mini (medium size)
- RWS-S-BG      RWS-shrub (small size)

Note: all models come with pre-installed 1401 series bubbler (60 l/h), locking grate (or snap-on) and spiral barb elbow for attachment of 1/2" swing pipe.

RWS-BGX model comes with 45 cm of 1/2" swing pipe.



RWS Series



Swing Pipe

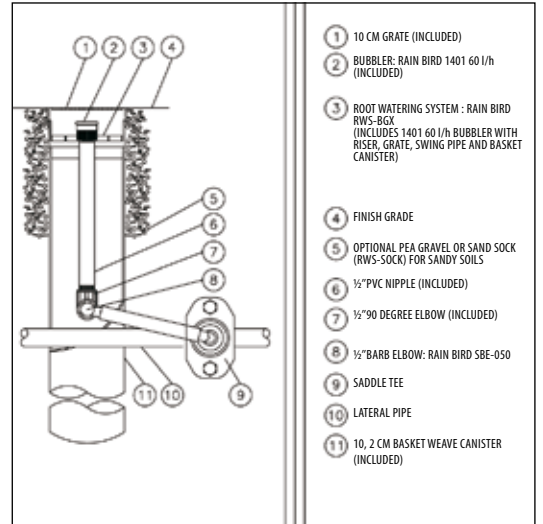
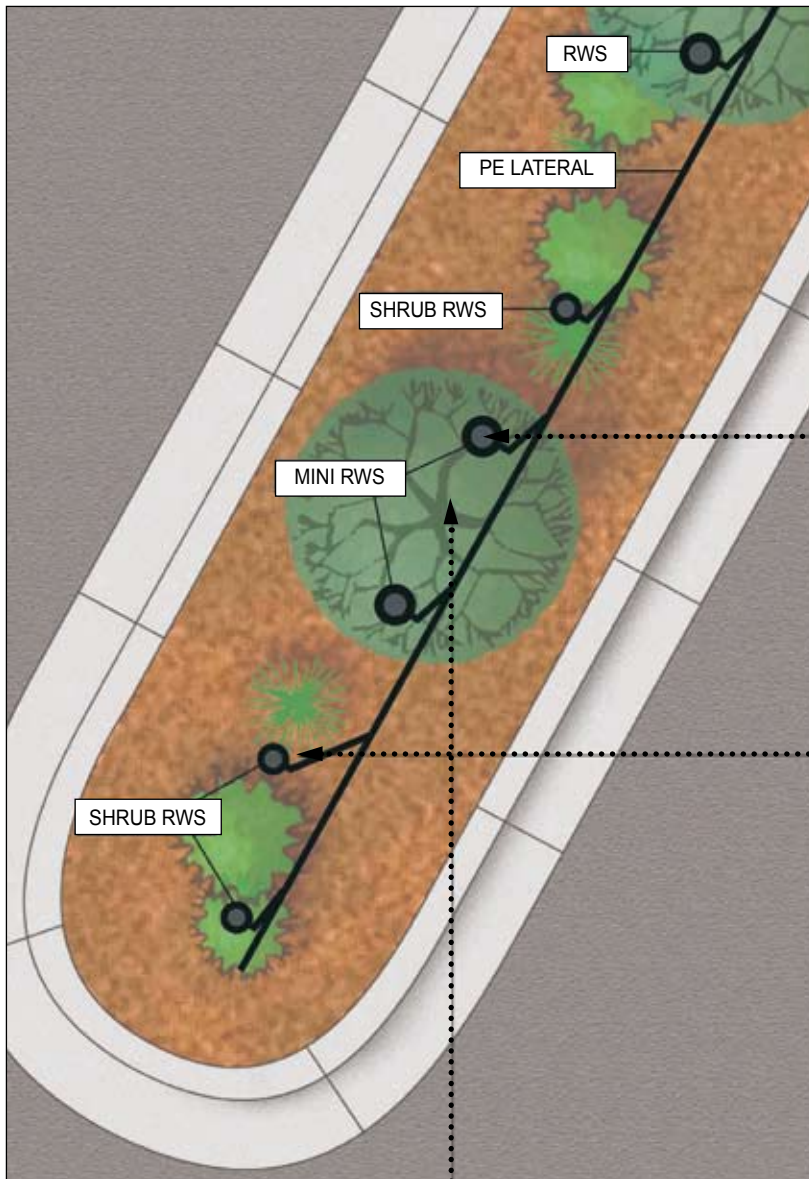
### BID ESTIMATE GUIDE:

Description	Time (Approx.)
• Dig trench for new tree or shrub.	10 min per plant
• Place the Root Watering System against the root ball.	1 min per plant
• Connect the Root Watering System to the water source.	2 min per plant
• Replace dirt leaving the grate uncovered.	2 min per plant

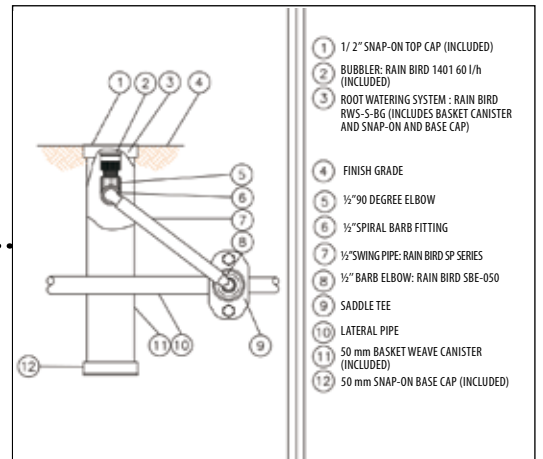
### INSTALLATION AND MAINTENANCE TIPS:

- Plant a minimum of two to three units per tree.
- Evenly space and position the Root Watering System against the root mass.
- Compatible with drip tubing system.
- See page 29 for additional information.

## Young trees and shrubs in planter bed CONTRACTOR PLAN



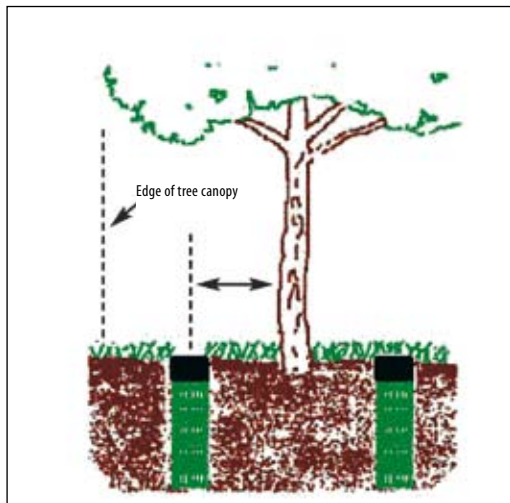
**ROOT WATERING SYSTEM**  
RWS-M SERIES  
RWS



**ROOT WATERING SYSTEM**  
RWS-S SERIES

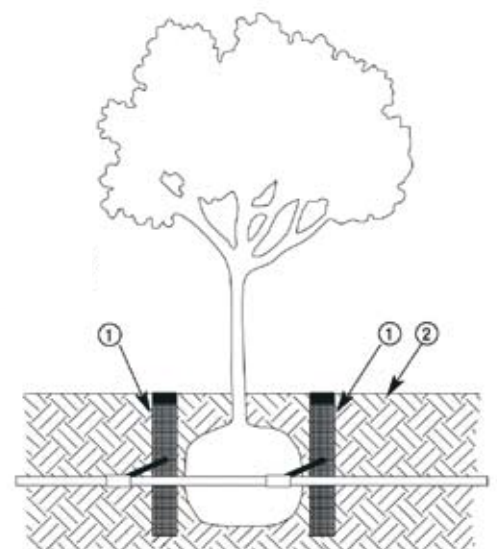
**ROOT WATERING SYSTEM**  
INSTALLATION DIAGRAM FOR NEW AND RELOCATED TREES

**ROOT WATERING SYSTEM**  
INSTALLATION DIAGRAM FOR TREES



- 1 - ROOT WATERING SYSTEM RAIN BIRD RWS-BGX (INCLUDES BUBBLER AND GRATE)
- 2 - FINISH GRADE

NOTE:  
POSITION UNITS EVENLY SPACED AROUND ROOT BALL. INSTALL PRODUCT WITH TOP EVEN WITH GROUND SURFACE.





## NARROW PLANTING BEDS

### Narrow Planting Bed Next To A Structure

*Combination Applications*

#### SOLUTION

**Landscape Dripline Grid with XB Drip Emitters**

#### ADVANTAGES

- *Up to 60% water savings due to zero wind loss*
- *No over spray damage to structures, fences or windows*
- *Supplemental XB Drip Emitters are placed next to larger plants with higher water requirements*
- *Landscape Dripline is easy to install for labor savings*

## INSTALLATION

### MATERIALS LIST:

- DP162233XXX Landscape Dripline 2,2 l/h and 33 cm spacing
- XCZ-075-PRF 3/4" Xeri Control Zone Kit
- MDCF Series Easy Fit Compression Fittings/Adapters
- C-12 Tie Down Stake
- XB XX Pressure Compensating Drip Emitters (2 to 8 l/h)
- DT-025 1/4" Distribution Tubing
- TS-025 1/4" Tubing Stake
- DBC-025 Diffuser Bug Cap



LANDSCAPE DRIPLINE



XM TOOL



XB



TS-025

### BID ESTIMATE GUIDE:

Description	Time (Approx.)
• Assemble Control Zone Kit and connect to water source.	1 hr
• Cut lengths of Landscape Dripline to build grid in planting area.	10 min/15 m
• Connect lengths of Landscape Dripline to Easy Fit Fittings to create grid.	20 min/15 m
• Connect Easy Fit Adapter to Easy Fit Tee for connection to Control Zone Kit.	5 min
• Staple Landscape Dripline grid in place.	5 min/3 m
• Punch self-piercing barb inlet of XB Drip Emitters into Landscape Dripline, connect 1/4" tubing to barb outlet and run 1/4" tubing to larger plant.	8 min/Emitter
• Stake tubing in place and attach bug cap on the end.	3 min/Stake
• Flush system for approximately 2 minutes.	2 min
• Install planting material.	

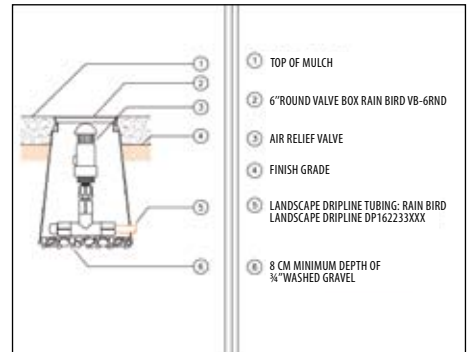
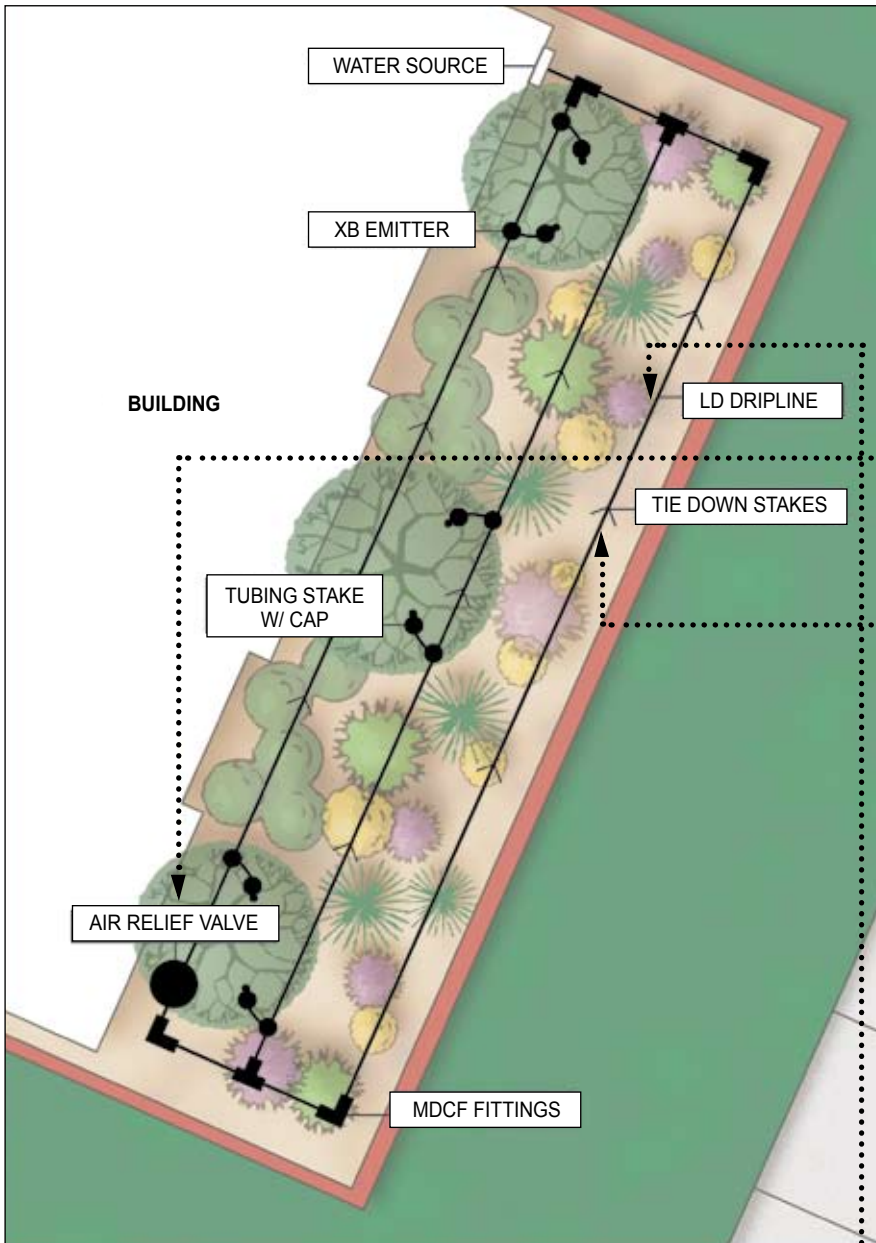
### INSTALLATION AND MAINTENANCE TIPS:

- Leave Landscape Dripline coil in the sun while preparing for installation.
- Install XB Drip Emitters with XM Tool for 50% faster installation.
- Flush the zone upon installation and once a year.

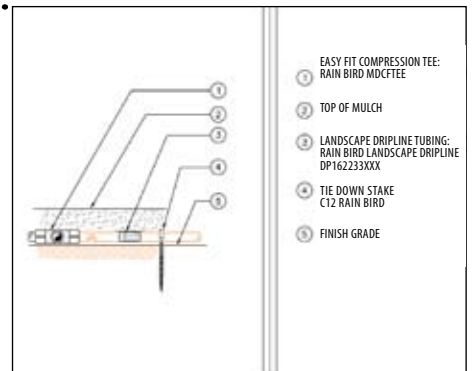
# Narrow Planting Bed Next To A Structure

Combination Applications

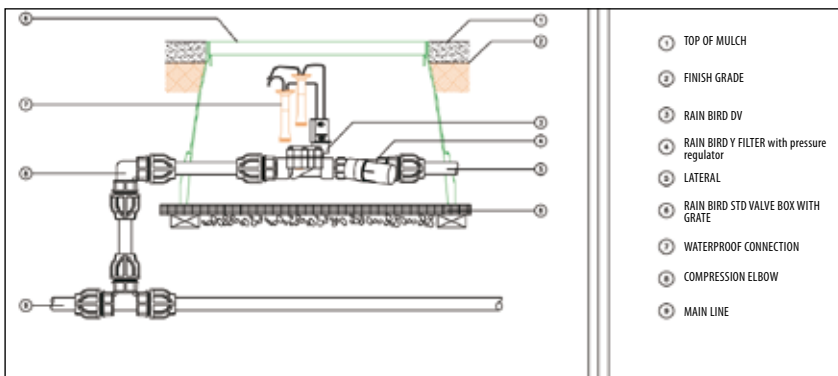
## CONTRACTOR PLAN AND INSTALLATION DETAILS



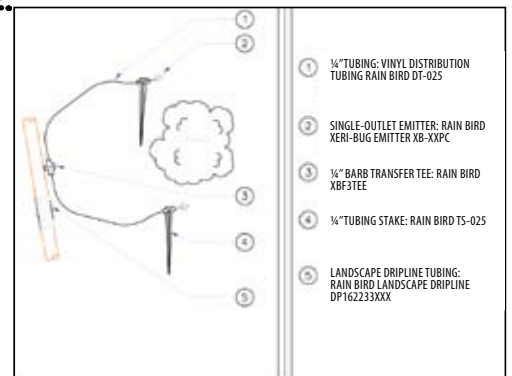
Air Relief Valve Kit



Landscape Dripline on Grade



Medium Flow Control Zone Kit  
XCZ-100



Landscape Dripline with Supplemental Emitters



## POTS/BASKETS/MISC.

### Hanging Baskets

#### SOLUTION

Rain Bird Irrigation Supplement (RB-IS)  
Gel pack & Perforated Tube

#### ADVANTAGES

- *Easy-to-install*
  - *Disperses water at a consistent rate*
  - *Eliminates evaporation and runoff*
  - *Product is 100% natural, non toxic and harmless to people and animals.*
- *Ideal irrigation supplement:*
    - *for both in-ground as well as container plants*
    - *for use in establishing native plant material where permanent irrigation is not required as well as new plant material in existing landscape areas.*
    - *when the site to water is difficult to access (i.e hanging basket)*
  - *Designed to significantly increase the time between watering cycles for container plants.*
  - *Maintain plants with around-the-clock moisture to the root zone for up to 30 days (2" model / 3" model with perforated tube) or to 90 days (3" model).*
  - *Low maintenance results in up to 60% labor savings.*

### INSTALLATION

#### MATERIALS LIST:

- RB-IS 2"      30-day gel pack
- RB-IS 3"      90-day gel pack
- RB-IS-TC      Perforated Tube and cap



RB-IS 2" 3"



RB-IS-TC

### BID ESTIMATE GUIDE

#### Description

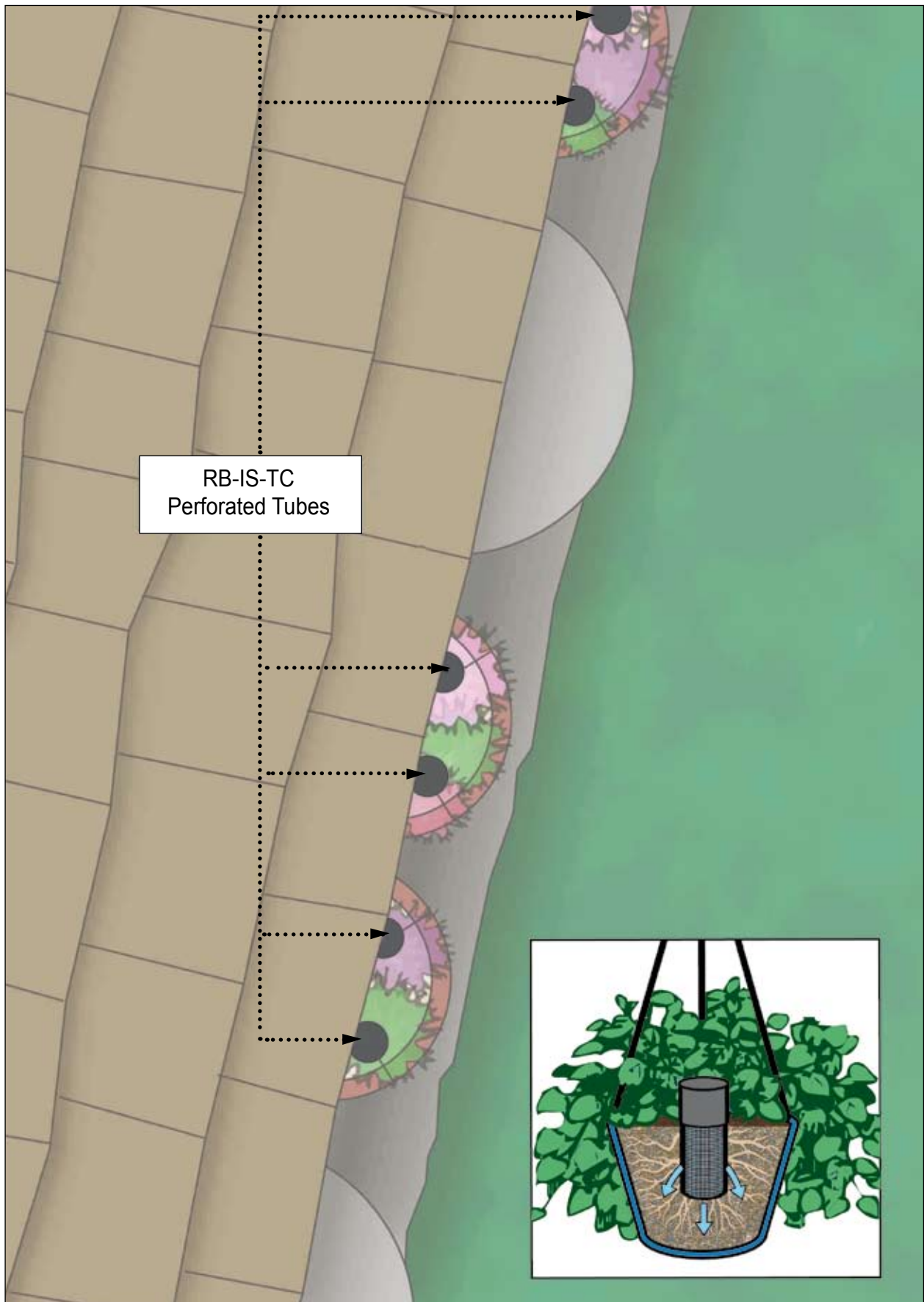
- Water plant thoroughly and let drain.  
**1 minute**
- Open Gel Pack by cutting end to end. Pull sides of the plastic casing apart to expose the entire length and half the circumference of gel.  
DO NOT REMOVE gel from the plastic bag when using directly on the soil surface.  
**1 minute**
- Place on moist soil surface, with opening face down, next to the stem of the plant without direct contact with stem.  
**1 minute**
- **Note:** in case you use the Perforated Tube, you have to place it in the center or uniformly around the pot, such that the lip of the tube will sit 3" above the soil surface when completely filled. Then, remove gel from plastic bag and wet using available water. Slide gel into tube and place cap on tube.

### INSTALLATION AND MAINTENANCE TIPS:

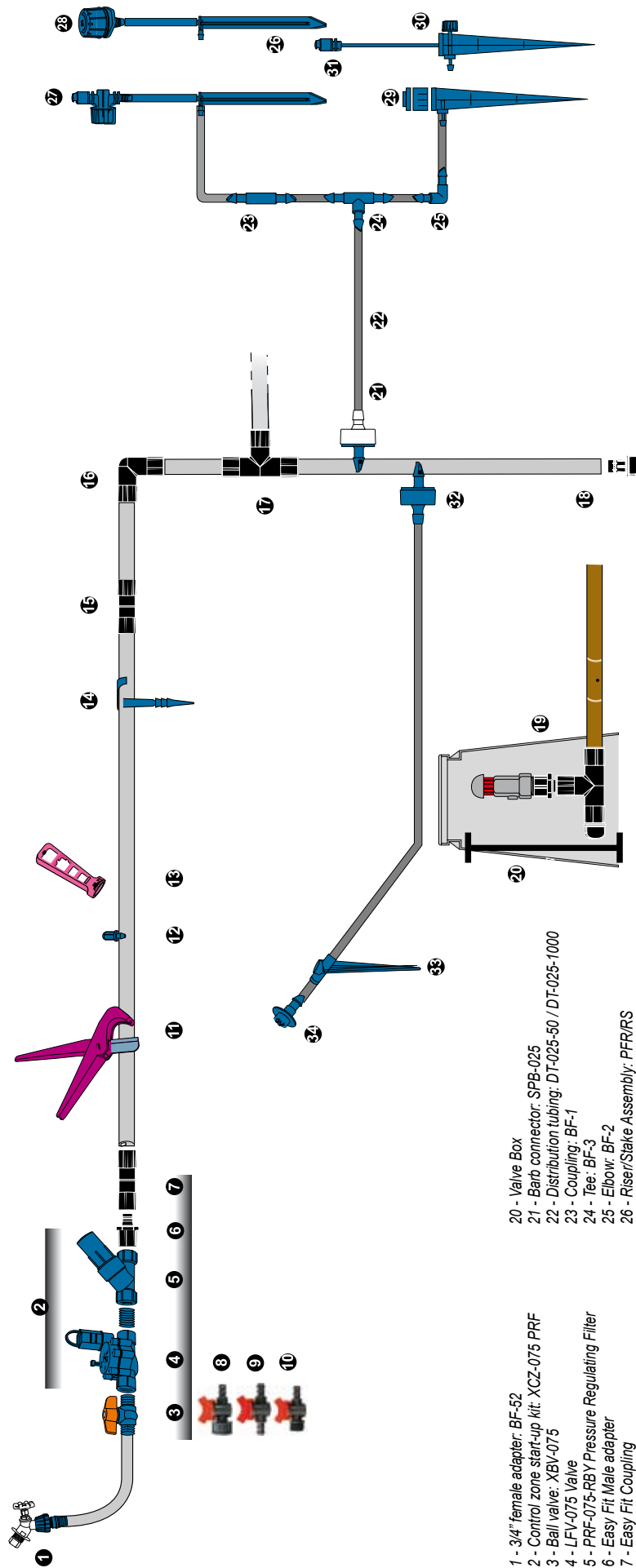
- Larger plants or plants with high water demand such as outdoor plants and hanging baskets will require additional Gel Packs and/or occasional watering. You can also put a perforated tube designed for 3" model which will release the gel faster (up to 30 days)
- The frequency at which you apply water will depend on the climate and the plant materials.
- Plants in above ground containers dry out faster than those planted in the ground. When it is used in this manner, additional watering will be needed.
- Users are advised to observe plants for signs of stress then water immediately to avoid damage to plant.
- See page 30 for performance tables and additional information.

## Hanging Baskets

### CONTRACTOR PLAN AND INSTALLATION DETAILS



# ANATOMY OF A RAIN BIRD LOW VOLUME IRRIGATION SYSTEM



- 1 - 3/4" female adapter: BF-52
- 2 - Control zone start-up kit: XCZ-075 PRF
- 3 - Ball valve: XBY-075
- 4 - LFV-075 Valve
- 5 - PRF-075-RBY Pressure Regulating Filter
- 6 - Easy Fit Male adapter
- 7 - Easy Fit Coupling
- 8 - Manual Valve: BF-62
- 9 - Manual Valve: BF-72
- 10 - Manual Valve: BF-82
- 11 - Tubing cutter: PPC-200X
- 12 - Plug: EMA-GPX
- 13 - Installation tool: XM-Tool
- 14 - 16 mm tie-down stake: C-12
- 15 - Easy Fit Coupling
- 16 - Easy Fit Elbow
- 17 - Easy Fit Tee
- 18 - Easy Fit Removable Flush Cap
- 19 - Air Relief Valve
- 20 - Valve Box
- 21 - Barb connector: SPB-025
- 22 - Distribution tubing: DT-025-50 / DT-025-1000
- 23 - Coupling: BF-1
- 24 - Tee: BF-3
- 25 - Elbow: BF-2
- 26 - Riser/Stake Assembly: PFRIRS
- 27 - Spray: XS-90, XS180, XS-360
- 28 - Micro-sprinkler: SXB-180, SXB-360
- 29 - Micro-spray: XS-360TS-SPYK
- 30 - Micro Sprinkler: SXB-360-SPYK
- 31 - Vari-Jet
- 32 - Emitter: XB-05PC, XB-10PC, XB-20PC
- 33 - Tubing stake: TS-025
- 34 - Diffuser cap: DBC-025



**LOW VOLUME IRRIGATION  
PRODUCTS**

## XCZ-075 PRF, XCZ-100-PRF 3/4" and 1" Control Zone Start-Up Kits

### APPLICATIONS

Control Zone Kits provide all of the components necessary to control flow, pressure and filtration for a low volume irrigation zone. These convenient kits provide automatic control of a drip irrigation zone when connected to an irrigation controller.

### FEATURES

- Includes a valve and a Pressure Regulating RBY filter.
- Simplest control zone kit in the industry with the fewest parts for easy installation and reduced maintenance.
- Shorter kits with less components means that you can fit more control zone kits in a valve box.
- Most reliable control zone kits on the market with proven Low Flow Valve or DV valve and fewer threaded connections which mean less chance of a leak both at installation and over the life of the system.

### SPECIFICATIONS

Pressure: 1,4 to 10,3 bars

Flow:

3/4" units: 45,4 to 1136 liters/hour; 0,01 to 0,32 l/s

1" units: 681 to 3407 liters/hour; 0,19 to 0,95 l/s

Filtration: 75 microns

Regulated pressure: 2,0 bar (3/4") or 2,8 bar (1")

### MODEL

XCZ-075 PRF: 3/4" Low Flow Valve + 3/4" Pressure Regulating RBY Filter  
 I-XCZ-100-PRF: 1" DV Valve + 1" Pressure Regulating RBY Filter



XCZ-075 PRF



XCZ-100-PRF



Simplest control zone kit in the industry

### Minimum Inlet Pressure for 2,8 bar Outlet Pressure

Flow, l/hr	Flow, l/s	Minimum Inlet Pressure for 2,8 bar Outlet Pressure	
		XCZ-075-PRF Bar	XCZ-100-PRF Bar
45,4	0,01	2,37	-
227	0,06	2,49	-
681	0,19	2,63	2,96
1136	0,32	2,99	3,04
1817	0,50	-	3,23
2271	0,63	-	3,34
3407	0,95	-	3,81

## LOW FLOW VALVE Control Zone Components

### APPLICATIONS

The only valve in the industry made specifically for drip irrigation systems, making this the only valve that can effectively handle particles at low flow rates (45,4 to 1136 liters/hour).

### FEATURES

- This valve contains all of the features of Rain Bird's reliable DV valve, coupled with a unique diaphragm design that allows particles to pass through at extremely low flow rates, thereby preventing weeping of the valve.
- Allows the filter to be safely placed downstream of the valve since this valve handles all sizes of particles.
- Unique "double-knife" diaphragm coupled with  $\frac{1}{2}$ " diameter seat for flawless operation at low flow rates.
- Double-filtered pilot flow design for maximum reliability
- External bleed to manually flush system of dirt and debris during installation and system start-up
- Internal bleed for spray-free manual operation



### SPECIFICATIONS

Flow :

45,42 to 1136 liters/hour ; 0,01 to 0,32 l/s

Pressure : 1,0 to 10,3 bars

### ELECTRICAL SPECIFICATIONS

24 VAC 50/60 Hz (cycles/sec) solenoid

Inrush current : 0.30 (7.2 VA) at 60 Hz

Holding current : 0.19 A (4.56 VA)

### DIMENSIONS

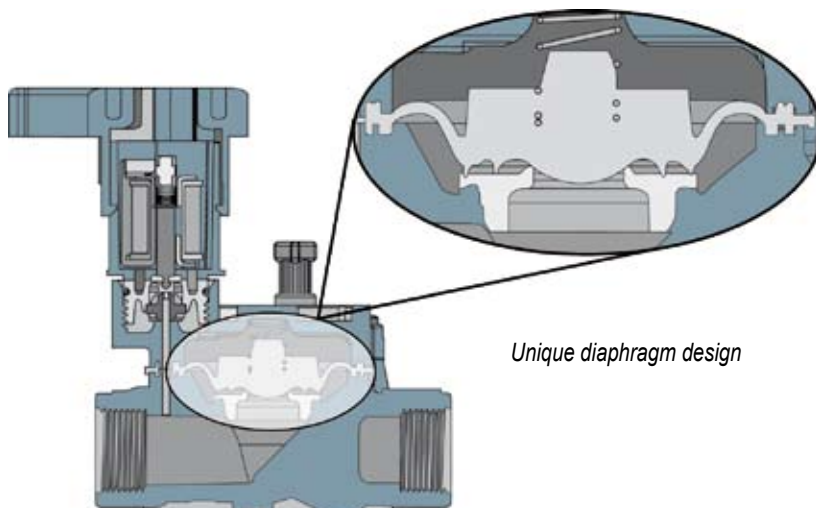
Height : 11,4 cm

Length : 10,7 cm

Width : 8,4 cm

### MODEL

LFV-075



*Unique diaphragm design*

### Friction Loss Characteristics

Flow, l/hr	Flow, l/s	LFV-075, bars
45,42	0,01	0,19
227	0,06	0,19
454	0,13	0,24
908	0,25	0,26
1362	0,38	0,30
1817	0,50	0,36



## PRESSURE-REGULATING FILTER

### APPLICATIONS

- The Pressure-Regulating (P/R) Filter reduces the number of components in a control zone, making it smaller and easier to install. More control zones can fit in one valve box!
- Combination unit reduces the number of connections, making installation easier and saving time.
- The P/R Filter provides increased reliability-fewer parts and fewer threaded connections mean less chance of a leak both at installation and also over the life of the system.

### FEATURES

- Unique, compact unit that combines filtration and pressure regulation in one unit for protection of downstream components in a drip irrigation system.
- Available in either the static RBY filter or the self-cleaning Back Flush Filter, each of these units regulates pressure to a nominal 2 bar.
- P/R RBY Filter Cap has sealing o-ring and unthreads to provide access to the filter element for easy cleaning
- P/R Backflush Filter provides self-cleaning action with every cycle, as debris is flushed every time the system is turned on and off
- 2 bar pressure regulator is integrated into filter body

- Body and cap made of glass filled nylon, providing 10,3 bar pressure rating
- Works with all valves to create a simple, efficient control zone.

### SPECIFICATIONS

Pressure: 1,4 to 10,3 bars

Flow:

3/4" units: 114 to 1136 liters/hour; 0,03 to 0,32 l/s

1" units: 681 to 3407 liters/hour; 0,19 to 0,95 liters/sec

Filtration: 75 microns

Regulated pressure: 2,0 bar (3/4") or 2,8 bar (1")

It is recommended to use a check valve with the back flush filter when filter is at a lower elevation than the rest of the system.



### MODEL

PRF-075-RBY: 3/4" RBY pressure regulating filter

PRF-075-BFF: 3/4" self-cleaning Back Flush Filter with pressure regulator

I-PRF-100-RBY: 1" RBY pressure regulating filter

I-PRF-100-BFF: 1" self-cleaning Back Flush Filter with pressure regulator

### ACCESSORIES

RBY-200MX: 75 micron replacement screen

CV075 : 3/4" CHECK VALVE

ICV100 : 1" CHECK VALVE

### Friction Loss Characteristics

Flow, l/hr	Flow, l/s	PRF-075-RBY bar	PRF-100-RBY bar	PRF-075-BFF bar	PRF-100-BFF bar
45,4	0,01	0,21	N/A	0,22	N/A
227	0,06	0,28	N/A	0,28	N/A
681	0,19	0,42	0,06	0,43	0,03
1136	0,32	0,69	0,14	0,71	0,14
1817	0,50	N/A	0,26	N/A	0,28
2271	0,63	N/A	0,36	N/A	0,37
3407	0,95	N/A	0,83	N/A	0,87

## BASKET FILTER

### APPLICATIONS

This new, innovative filter provides reliability and reduces labor and maintenance costs.

### FEATURES

- Top contains clear indicator that goes from green to red when filter is full, telling you when to clean the filter. This reduces maintenance and takes the guesswork out of cleaning the filter.
- Threaded top makes it easy to remove and clean the stainless steel screen.
- "No Spill" feature ensures that the dirt does not fall out of the basket filter element when you remove the screen for cleaning.

### SPECIFICATIONS

Pressure: 0 to 10.3 bars

Flow:

3/4" Basket Filter: 45,4 to 2725 liters/hour

1" Basket Filter: 681 to 4542 liters/hour

### MODEL

- QKCHK-075 (3/4" Basket Filter)
- QKCHK-100 (1" Basket Filter)
- QKCHK-100M (150 micron screen)
- QKCHK-200M (75 micron screen)

### Friction Loss Characteristics

#### QKCHK-075

Flow Rate, l/hr	Flow Rate, l/s	75 micron, bar
45,42	0,01	0,03
454	0,13	0,03
908	0,25	0,05
1362	0,38	0,06
1817	0,50	0,08
2271	0,63	0,10
2725	0,76	0,13



### Friction Loss Characteristics

#### QKCHK-100

Flow Rate, l/hr	Flow Rate, l/s	75 micron, bar
681	0,19	0,01
1136	0,32	0,02
1590	0,44	0,04
2044	0,57	0,06
2498	0,69	0,08
3179	0,88	0,14
3861	1,07	0,21
4542	1,26	0,30



## PSI-M20, PSI-M25 Pressure Regulators

### APPLICATIONS

These preset pressure regulators are designed to provide a constant outlet pressure in micro-irrigation installations.

### FEATURES

- Preset outlet pressure
- Designed for above and below grade use

### PSI-M SPECIFICATIONS

Flow range: 0.45 to 5 m<sup>3</sup>/h

Inlet pressure:

- PSI-M20: 1.5 to 7 bar

- PSI-M25: 2.0 to 7 bar

3/4" (20/27) female threaded inlet and outlet

### MODELS

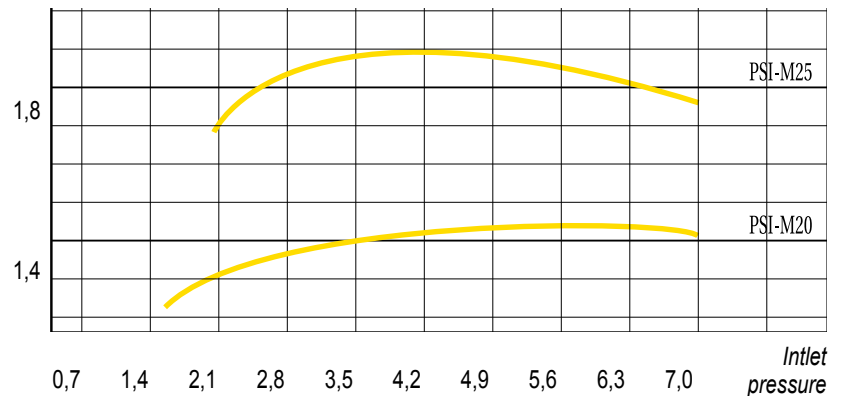
PSI-M20: preset outlet pressure: 1.4 bar

PSI-M25: preset outlet pressure: 1.8 bar



### PERFORMANCE

Outlet pressure



## EMT-6X 6 Outlet Manifold

### APPLICATIONS

1/2" (15/21) inlet threads onto 1/2" riser and provides a manifold with six free-flowing 1/4" barb outlets.

### FEATURES

- Each barb outlet is sealed with a durable plastic cap.
- Plastic caps remove easily, allowing for a drip area that can be customized with up to six different emission devices.

- Use the EMT-6X with emitters, sprays and bubblers.

### OPERATING RANGE

Pressure: 1,0 to 3,5 bar

### MODEL

EMT-6X: 6 outlets manifold



## 1800™ Retrofit Kit For 1800™ Spray Heads

### APPLICATIONS

Permits convenient conversion to drip tubing when used with compression adapter.

### FEATURES

- Provides 2,0 bar pressure regulation and 75-micron screen that is easily accessible.
- Internal assembly drops into any 1804, 1806 or 1812 spray head body to easily retrofit existing system to Low Volume application products.
- Can be installed above or below grade.
- If retrofit flow is less than 0,75 m<sup>3</sup>/h, replace electronic valve with Rain Bird Control Zone Kit. (see XCZ-075)

### SPECIFICATION

Flow: 0,11 to 0,91 m<sup>3</sup>/h;

Inlet Pressure: 1,0 to 4,8 bar

### DIMENSIONS

1/2" (15/21) female-threaded inlet

1/2" (15/21) male-threaded swivel outlet

Height: 17,8 cm

Width: 5,1 cm

### MODELS

1800 RETRO : 1800™ Retrofit Kit



## 1800™ Xeri-Caps™ Caps for Spray Heads

### APPLICATIONS

Used to retrofit a spray head system to a Low volume system by capping off any unused spray heads.

### SPECIFICATION

Pressure: 0,0 to 4,8 bar

### DIMENSIONS

Width: 5,7 cm

### MODELS

XC-1800 : Caps for 1800™ Spray Heads



## RAIN BIRD DRIPLINE SERIES

### Inline Pressure Compensating Emitter Tubing: $\varnothing$ 16 mm - Unmatched Performance

#### APPLICATIONS

Rain Bird Dripline inline emitter tubing is ideal for irrigating any row vegetation: hedges, trees, shrubbery and ground cover. Its outstanding pressure compensation makes it particularly suitable for watering slope plantings. Unmatched clog-resistance for long term reliability.

#### FEATURES

- Spacings : 33, 40 or 50 cm
- **Larger flow path : the pressure is compensated by 'lengthening' the emitter's turbulent flow path instead of reducing the cross-sectional area of the emitter's flow path. The result is unsurpassed clog-resistance.**
- Pressure compensation : ensures consistent flow from each inline emitter throughout the entire length of tubing run.
- **Two layers : brown outside and black inside**
  - better resistance to U.V
  - less algae formed in the tubing
  - crush-resistant.
- Cylindrical shape :
  - the emitter 'welds' to the inner circumference of the tubing, keeping the emitter securely in place
  - larger surface area for filtration throughout 360°
  - faster installation because the emitter is easily visible.
- **Dual outlet ports : eliminate the risk of back-siphoning debris into the tubing.**

#### SPECIFICATIONS

Pressure: 0.8 to 4 bar.  
 Coil length: 100 m  
 Flow: 2.2 l/h  
 Recommended filtration: 125 microns  
 Maximum temperature  
 - water: 43 °C  
 - ambient: 51 °C

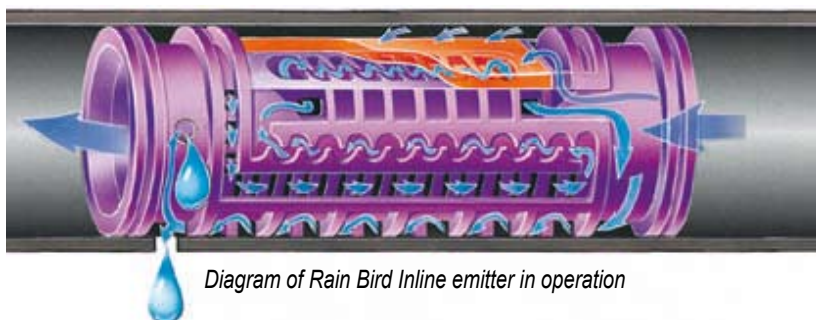
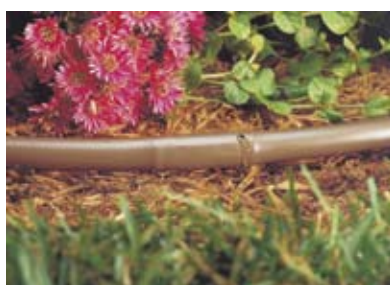


#### DIMENSIONS

Outside diameter: 16 mm  
 Inside diameter: 13.7 mm  
 Wall thickness: 1.15 mm

#### MODELS

DP162233100: 100 m length, 16 mm outside diameter, 33 cm emitter spacing, 2.2 l/h flow  
 DP162240100: 100 m length, 16 mm outside diameter, 40 cm emitter spacing, 2.2 l/h flow  
 DP162250100: 100 m length, 16 mm outside diameter, 50 cm emitter spacing, 2.2 l/h flow



#### PERFORMANCE

##### Maximum run length

Inlet water pressure (bar)	Slope (%)	Flow 2.2 l/h Emitter spacing 33 cm	Flow 2.2 l/h Emitter spacing 40 cm	Flow 2.2 l/h Emitter spacing 50 cm
1,5	-3	91	108	132
	-2	89	105	128
	-1	86	101	123
	0	83	97	116
	1	79	92	110
	2	76	88	103
2,0	3	73	83	97
	-3	107	127	154
	-2	105	124	150
	-1	102	121	146
	0	100	117	140
	1	97	113	135
2,5	2	94	109	129
	3	91	105	123
	-3	119	141	171
	-2	117	138	167
	-1	115	135	163
	0	112	132	158
3,0	1	110	128	153
	2	107	125	148
	3	105	121	143
	-3	129	153	185
	-2	127	150	182
	-1	125	147	178
3,5	0	123	144	173
	1	120	141	168
	2	118	138	164
	3	116	134	159
	-3	138	163	198
	-2	136	160	194
4,0	-1	134	158	190
	0	132	154	186
	1	129	152	181
	2	127	148	177
	3	125	146	173
	-3	145	172	208
4,0	-2	144	170	205
	-1	142	167	201
	0	140	164	197
	1	137	161	193
	2	135	158	189
	3	133	155	185

**NOTE:** The above chart indicates the maximum permissible dripline run length to obtain a minimum pressure of 0.8 bar at the end of the line.

1. Select the inlet pressure
2. Select the slope (0=flat surface, -1 = downslope of 1%, etc.)
3. Consult the maximum run length in the emitter spacing column.



## RAIN BIRD XB PC SERIES

### Pressure Compensating Self - piercing Emitters

#### APPLICATIONS

XB PC emitters deliver precise amounts of water to plant root zones. They are ideal for watering hedges, trees, shrubbery and potted plants. The pressure compensating feature makes them particularly suitable for watering vegetation planted on slopes.

#### FEATURES

- This pressure compensating emitter provides flow uniformity on uneven terrain. Self-piercing barb permits installation with the XM-TOOL
- Outlet barb accepts 4-6 mm distribution tubing (DT-025-50 / DT-025-1000)
- Highly inert diaphragm is resistant to chemicals

#### SPECIFICATIONS

Pressure: 1 to 3.5 bar  
Flow: 1.33 l/h to 7.20 l/h

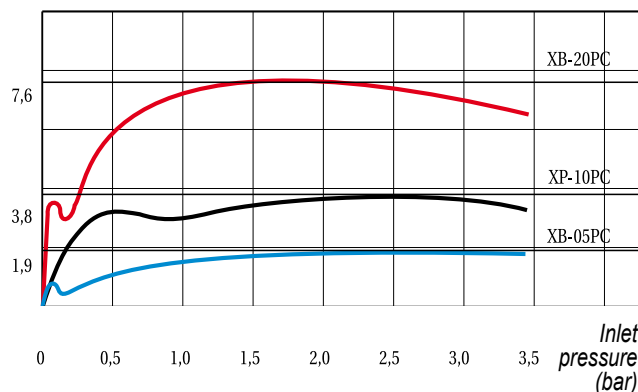
#### MODELS

- XB-05PC (blue): 1.9 l/h pressure compensating self-piercing emitter
- XB-10PC (black): 3.8 l/h pressure compensating self-piercing emitter
- XB-20PC (red): 7.6 l/h pressure compensating self-piercing emitter



#### PERFORMANCE

Flow (l/h)



## XB-10-6

### Multi-Outlet Xeri-Bub™

#### APPLICATIONS

Pressure compensating emitters provide precise and water-conserving irrigation to promote the healthy growth of ornamental plants, shrubs and trees.

#### FEATURES

- Pressure compensating design delivers uniform flow throughout a wide pressure range (1,0 to 3,5 bar).
- Six-outlet emitter supplied with one outlet opened. Simply clip the outlet tips open with snips or clippers for additional operational ports.
- Barbed outlets retain 1/4" distribution tubing (DT-025).
- Self-flushing action minimizes clogging.
- Durable, UV-resistant plastic housing.
- Barbed inlet inserts into drip tubing with use of a hole punch tool.

#### OPERATING RANGE

Flow: 3,79 L/h  
Pressure: 1,0 to 3,5 bar  
Filtration: 100 micron



#### MODEL

XB-10-6 : 6-outlet pressure compensating emitter

## SXB-180, SXB-360 SERIES

### Threaded and Barbed Micro-Sprinklers with Distinct Streams and Adjustable Flow

#### APPLICATIONS

Micro-sprinklers available in 180° and 360° patterns. Adjustable flow and radius are controlled by turning outer cap. Ideal for mass shrub plantings, trees, containers and flower beds.

#### FEATURES

- Distinct streams
- Can be cleaned by unscrewing the cap from base unit
- 10-32 self tapping threads fit into stake and riser assembly (PFR/RS): SXB-180, SXB-360
- Barb connection for installation into 13-16 mm tubing: SXB-360-025

#### SPECIFICATIONS

Pressure: 1 to 2 bar  
Flow: 0 to 49 l/h  
Radius:  
SXB-180: adjustable from 0 to 49 cm  
SXB-360: adjustable from 0 to 46 cm  
SXB-360-025: adjustable from 0 to 46 cm

#### MODELS

- SXB-180:  
180° micro sprinkler;  
5 distinct streams (thread)
- SXB-360:  
360° micro sprinkler;  
8 distinct streams (thread)
- SXB-360-025:  
360° micro sprinkler;  
8 distinct streams (barb)



#### PERFORMANCE

bar	SXB-180		SXB-360/SXB-360-025	
	cm	l/h	cm	l/h
1,0	0-37	0-33	0-19	0-33
1,5	0-50	0-41	0-32	0-41
2,0	0-63	0-49	0-46	0-49

## VARI-JET SERIES

### Adjustable Spray on Spike

#### APPLICATIONS

This adjustable spray is shipped ready to install. Ideal for flower beds, ground cover, potted plants, etc

#### FEATURES

- Vari-Jet mounted on 15 cm Spike
- Choice of 3 sprays patterns : 90°, 180° and 360°
- Adjustable flow
- Solid stake with built-in hole punch
- Excellent distribution uniformity

#### SPECIFICATIONS

Pressure : 0,5 to 2,5 bar  
Flow : adjustable from 0 to 120 l/h  
Radius : adjustable from 0 to 4,1 m

#### MODELS

Vari-Jet Spike 90°  
Vari-Jet Spike 180°  
Vari-Jet Spike 360°



bar	Vari-Jet 90°		Vari-Jet 180°		Vari-Jet 360°	
	m	l/h	m	l/h	m	l/h
0,5	0 - 1,5	0 - 52	0 - 1,9	0 - 52	0 - 2,5	0 - 52
1,0	0 - 2,4	0 - 75	0 - 2,4	0 - 75	0 - 3,4	0 - 75
1,5	0 - 2,9	0 - 92	0 - 3,0	0 - 92	0 - 4,1	0 - 92
2,0	0 - 3,1	0 - 107	0 - 3,2	0 - 107	0 - 4,1	0 - 107
2,5	0 - 3,3	0 - 120	0 - 3,4	0 - 120	0 - 3,6	0 - 120

## XS-90, XS-180, XS-360 SERIES

### Adjustable Flow Sprays

#### APPLICATIONS

These sprays have a uniform emission pattern to provide excellent distribution. Adjustable flow/radius by turning integral ball valve. Ideal for ground cover and annual flower beds.

#### FEATURES

- Uniform emission pattern and excellent distribution
- 10-32 self-tapping threads fit into stake and riser assembly (PFR/RS)

#### SPECIFICATIONS

Pressure: 0.5 to 2.5 bar

Flow: 0 to 130 l/h

Radius:

XS-90: adjustable from 0 to 3.3 m

XS-180: adjustable from 0 to 3.4 m

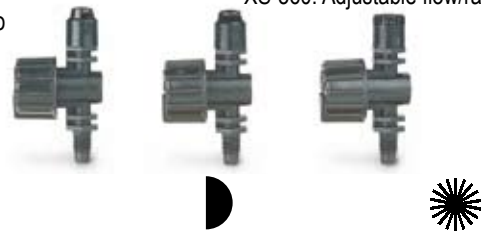
XS-360: adjustable from 0 to 4.1 m

#### MODELS

XS-90: Adjustable flow/radius 90° spray

XS-180: Adjustable flow/radius 180° spray

XS-360: Adjustable flow/radius 360° spray



#### PERFORMANCE

bar	XS-90		XS-180		XS-360	
	m	l/h	m	l/h	m	l/h
0,5	0-1,5	0-53	0-1,9	0-53	0-2,5	0-53
1,0	0-2,4	0-78	0-2,4	0-78	0-3,4	0-78
1,5	0-2,9	0-98	0-3,0	0-98	0-4,1	0-98
2,0	0-3,1	0-115	0-3,2	0-115	0-4,1	0-115
2,5	0-3,3	0-130	0-3,4	0-130	0-3,6	0-130

## SXB-360-SPYK

### Adjustable Flow Micro-Sprinkler on Spike

#### APPLICATIONS

This adjustable Micro-Sprinkler with full circle pattern is shipped ready to install. Ideal for shrub plantings, trees, containers and flower beds.

#### FEATURES

- Micro-Sprinkler mounted on 12.7cm spike

- 360° spray pattern

- Adjust flow and radius by turning outer cap

- Clean by completely unscrewing cap from base unit

- Excellent distribution uniformity

#### SPECIFICATIONS

Pressure: 1 to 2.0 bar

Flow: adjustable from 0 to 49l/h

Radius: adjustable from 0 to 46 cm

#### MODEL

SXB-360-SPYK:

Adjustable flow Micro-Sprinkler on spike

bar	cm	l/h
1,0	0-19	0-33
1,5	0-32	0-41
2,0	0-46	0-49



## XS-360TS-SPYK

### Adjustable Flow Micro-spray on Spike

#### APPLICATIONS

This micro-spray with full circle pattern is shipped ready to install. Ideal for flower beds, ground cover, potted plants, etc.

#### FEATURES

- Micro-spray mounted on 12.7 cm spike
- 360° spray pattern

- Shipped with 4-6 mm barb connection for installation into 13-16 mm tubing

- Excellent distribution uniformity

#### SPECIFICATIONS

Pressure: 1 to 2.0 bar

Flow: adjustable from 0 to 90 l/h

Radius: adjustable from 0 to 2.0 m

#### MODEL

XS-360TS-SPYK:

Adjustable flow micro-spray on spike

bar	m	l/h
1,0	0-1,4	0-64
1,5	0-1,8	0-78
2,0	0-2,0	0-90



## BF-62, BF-72, BF-82 SERIES Manual valves for 13-16 mm tubing

### APPLICATIONS

Used to connect 13-16 mm tubing to a water supply point (BF-62 / BF-82) or two sections of 13-16 mm tubing (BF-72) and to manually open and close an irrigation system.

### MODELS

BF-62: 3/4" female threaded x barb manual valve for 13-16 mm tubing

BF-72: 13-16 mm manual valve with barbed inlet and outlet

BF-82: 13-16 mm barb x 3/4" male threaded manual valve for 16 mm tubing



## XBV-075 Ball Valve

### APPLICATIONS

This manual valve allows you to open and close your low volume irrigation system.

### FEATURES

- Positive drip-tight shutoff
- Rapid 1/4 -turn on/off control
- Durable 3/4" (20/27) PVC body and rugged ABS handle

### SPECIFICATIONS

Flow: 0 to 5.0 m<sup>3</sup>/h

Pressure: 1.0 to 10 bar

3/4" (20/27) male threads

### MODEL

XBV-075



## HOLE PUNCH For 13-16 mm Tubing

### APPLICATIONS

Emission device installation punch for 13-16 mm tubing.

### MODEL

Hole Punch for 13-16 mm tubing



## XM-TOOL Installation Tool

### APPLICATIONS

Used to install Rain Bird low volume irrigation components such as self-piercing emitters with or without 4-6 mm distribution tubing and goof plugs into drip tubing. Also used to easily remove installed emitters.

### FEATURES

- Made of bright colored plastic to make it easy to find
- Specially designed for Rain Bird low volume irrigation products

### MODELS

XM-TOOL:  
Installation tool



## PPC-200X Tubing Cutter

### APPLICATIONS

Designed for easy and clean cutting of all distribution tubing used in low volume irrigation installations.

### FEATURES

- Lightweight
- Nylon handles
- Stainless steel blades

### SPECIFICATIONS

Length: 21.5 cm

MODEL  
PPC-200X:  
tubing  
cutter



## 700-CF-22 Tubing End Closure

### APPLICATIONS

Figure 8 end closures are used at the end of 13-16 mm tubing

### FEATURES

- Easily installed onto the end of 13-16 mm tubing. Easily removed for flushing

### SPECIFICATIONS

Pressure: 0 to 3.5 bar

### MODEL

700-CF-22: End Closure for 13-16 mm tubing



## C-12 Tie-Down Stake for 13-16 mm Tubing

### APPLICATIONS

Used to hold down 13-16 mm tubing to finish grade.

### MODEL

C-12: Tie-Down Stake for 13-16 mm tubing



## R-34 SERIES 3/4" Male Adapter for 13-16 mm or 9-12 mm tubing

### APPLICATIONS

Used to directly connect 13-16 mm or 9-12 mm tubing to a faucet or any distribution component with a 3/4" female outlet (filter, electric valves, pressure regulators, etc.).

### MODELS

R-34-16: 3/4" male tubing adapter - 13-16 mm tubing

R-34-12: 3/4" male tubing adapter - 9-12 mm tubing



## BF-52 3/4" Female Adapter for 13-16 mm Tubing

### APPLICATIONS

Can be screwed directly onto a 3/4" male faucet to connect 13-16 mm tubing.

### MODEL

BF-52: 3/4" female adapter for 13-16 mm tubing.



## END PLUG For 13-16 mm Tubing

### APPLICATIONS

This End-Plug is used at the end of 13-16 mm tubing.

### FEATURES

- Easily installed onto the end of 13-16 mm tubing
- Easily removed for flushing

### MODEL

End Plug for 13-16 mm tubing



## CLAMP For 13-16 mm Tubing

### APPLICATIONS

Clamps are used for 13-16 mm tubing.

### MODEL

Clamp for 13-16 mm tubing.



## BF-32-16, BF-32-12 SERIES Barb Tee

### APPLICATIONS

Used to connect 13-16 mm or 9-12 mm tubing

### MODELS

BF-32-16: 13-16 mm barb tee

BF-32-12: 9-12 mm barb tee



## BF-12-16, BF-12-12 SERIES Barb Connector

### APPLICATIONS

Used to connect 13-16 mm or 9-12 mm tubing

### MODELS

BF-12-16: 13-16 mm barb connector

BF-12-12: 9-12 mm barb connector



## BF-22-16, BF-22-12 SERIES Barb Elbow

### APPLICATIONS

Used to connect 13-16 mm or 9-12 mm tubing

### MODELS

BF-22-16: 13-16 mm barb elbow

BF-22-12: 9-12 mm barb elbow



## SPB-025 Self-Piercing Barb Connector

### APPLICATIONS

Self-piercing transfer fitting can be inserted into a 13-16 mm tubing using your XM-TOOL. Outlet barb accepts 4-6 mm distribution tubing (DT-025-50 / DT-025-1000).

### FEATURES

- Gray color indicates unit has unrestricted flow and avoids confusion with XB PC emitters

### SPECIFICATIONS

Pressure: 0 to 3.5 bar

### MODEL

SPB-025: Transfer fitting for 4-6 mm distribution tubing



## TS-025 Tubing Stake

### APPLICATIONS

Used for holding 4-6 mm distribution tubing (DT-025-50/DT-025-1000) in place at the root zone.

### FEATURES

- Constructed of UV-resistant plastic material
- Height: 10 cm

### MODEL

TS-025: stake for 4-6 mm tubing



## DT-025-50 / DT-025-1000 4-6 mm Distribution Tubing

### APPLICATIONS

Extends emitter outlets to desired locations.

### FEATURES

- Made from flexible polyvinyl materials.
- Fits over all barbed outlet ports in the Rain Bird low volume irrigation line.

### SPECIFICATIONS

Outside diameter: 6 mm  
Inside diameter: 4 mm

### MODELS

DT-025-50: 4-6 mm distribution tubing; 15 m coil.  
DT-025-1000: 4-6 mm distribution tubing; 306 m coil



## EMA-GPX Tubing Goof Plug

### APPLICATIONS

Used to plug any unwanted holes made while inserting self-piercing emission devices into 13-16 mm tubing.

### MODEL

EMA-GPX plug



## PFR/RS Riser/Stake Assembly

### APPLICATIONS

Riser and stake combination is used to install emission devices such as micro-sprays or micro-sprinklers in planter beds.

### FEATURES

- The stake and riser combination consists of a riser (PFR-12) mounted on a stake (RS-025)
- The stake is connected to the 13-16 mm tubing by 4-6 mm distribution tubing (DT-025-50/DT-025-1000)
- Easy to install, this combination saves time and money

### MODELS

PFR/RS: 4-6 mm barb stake  
Micro-irrigation riser: 30 cm long.



## DBC-025 Diffuser Bug Cap

### APPLICATIONS

Diffuser for 4-6 mm tubing to minimize soil erosion at emission point. It also prevents insects and other debris from clogging 4-6 mm distribution tubing.

### FEATURES

- Barb inlet fits into 4-6 mm distribution tubing (DT-025-50/DT-025-1000)
- Flanged shield directs water to the desired location

### SPECIFICATIONS

Pressure: 0 to 1.7 bar

### MODEL

DBC-025 diffuser for 4-6 mm tubing



## BF-1, BF-2, BF-3 Barb Transfer Fittings for 4-6 mm Tubing

### APPLICATIONS

Used to connect 4-6 mm distribution tubing (DT-025-50/DT-025-1000).

### FEATURES

- Rugged plastic construction
- Pressure: 0 to 3.5 bar

### MODELS

BF-1: barb connector for 4-6 tubing  
BF-2: barb x barb ell for 4-6 tubing  
BF-3: barb x barb x barb tee for 4-6 tubing



## RWS SERIES

### Root Watering System - There's no better way to encourage healthy trees.

#### APPLICATIONS

The RWS Series are designed for tree and shrub watering . The Rain Bird RWS Root Watering System enables vital water , air , and nutrients to bypass compacted soil & directly reach tree and shrub root systems .This system is intended for use with water dispensing devices ( bubbler head ) .

#### FEATURES

- 3-year warranty.
- Patented basket weave canister design
- Promotes trees & shrub health by allowing water , oxygen and nutrients to reach feeder roots in areas with compacted soil or thick lawns .
- Releases trapped gases that may increase plant stress .
- Ideal for urban settings : Subterranean watering encourages roots to remain below surface , tree roots are less prone to damage .
- The grate locking feature protects against vandalism .
- Compatible with drip tubing systems .
- Save time & assembly labour versus homemade systems because the system comes with pre-installed Rain Bird 1401 Series pressure compensating bubbler .

- Aesthetically pleasing because it's installed below grade
- Easy to specify: one model instead of a host of parts.
- Reliability because all units are self-contained and factory assembled
- Locking grate feature protects system
- Mesh tube are perforated with thousands of holes, allowing water to permeate the ground at the root bulb while providing excellent aeration .

#### SPECIFICATIONS

##### RWS & Mini -RWS models :

- The Rain Bird Root watering device will consist of a grate retainer constructed from high-grade polymer with UV-resistant thermoplastic inhibitors. The grate retainer will also secure the pre assembled system consisting of bubbler & barb fitting .
- No adjustment required
- Pre-installed Rain Bird 1401 Series bubbler
- Pressure compensating from 1,5 to 5,5 bar .
- Flow rate :0,072m<sup>3</sup>/h ( 72l/h )

##### Shrub -RWS model :

- The Rain Bird Root watering device will consist of a snap-on cap and base cap constructed from high-grade polymer with UV-resistant thermoplastic inhibitor. The cap will house the basket weave container. The snap-on cap will also secure the pre installed system consisting of a bubbler & barb fitting .
- No adjustment required
- Pre-installed Rain Bird 1401 Series bubbler
- Pressure compensating from 1,5 to 5,5 bar .
- Flow rate :0,072m<sup>3</sup>/h ( 72l/h )



#### DIMENSIONS

##### RWS model :

- Height: 91,4 cm
- Diameter : 10,2 cm

##### Mini-RWS model :

- Height: 45,7 cm
- Diameter : 10,2 cm

##### Shrub RWS model :

- Height: 25,4 cm
- Diameter : 5,1 cm

#### MODELS

- RWS-BGX: system with factory pre-installed Rain Bird 1401 Series bubbler , locking grate , spiral barb elbow & 45cm of ½" swing pipe .
- RWS-M-BG : system with factory pre -installed Rain Bird 1401 Series bubbler , locking grate , spiral barb elbow for attachment of ½" swing pipe .
- RWS-S-BCG : system with factory pre -installed Rain Bird 1401 Series bubbler , snap-on -cap , spiral barb elbow for attachment of ½" swing pipe .



#### ACCESSORIES

##### RWS-SOCK

Root Watering System Sand Sock

##### APPLICATION

The RWS-SOCK is designed to fit outside of Rain Bird RWS-BGX. It is for use in sandy soil installations and will deter fine soil from infiltrating into the RWS basket weave canister.

##### DIMENSIONS

Height : 91,4 cm  
Diameter : 10,2 cm

##### FEATURES

- The « Sand Sock » is used to slip over the RWS-BGX
- Sock made of polypropylene
- Deter fine soil from entering the RWS-BGX basket weave canister

##### MODEL

RWS-SOCK : Root Watering System Sand Sock



# RB-IS SERIES

## Irrigation Supplement

### APPLICATIONS

Rain Bird Irrigation Supplement is water bound in the form of a solid gel. It is an ideal irrigation supplement for use in establishing native plant material where permanent irrigation is not required as well as new plant material in existing landscape areas. Rain Bird Irrigation Supplement increases survival rates of transplants by providing continuous moisture needed to reduce the stress of relocation. 2" model is ideal for indoor plants as well as hanging baskets.

### FEATURES

- Helps new transplants become established in existing landscapes:  
Existing vegetation is not subjected to over-watering while trying to establish the new plant has its own additional source of water until it becomes established.
- Ideal for indoor plants as well as hanging baskets.
- Disperses water at a consistent rate for up to 30 or 90 days:  
Bacteria naturally found in soil gradually break down the food grade ingredients and convert Rain Bird Irrigation Supplement back into liquid water at a consistent and steady release rate. For a standard use of RB-IS at 20°C as indicated in the instruction manual, RB-IS will last 30 days (Gel Pack 2") or 90 days (Gel Pack 3").
- Thanks to the water retention of the soil, moisture is maintained at the root zone.
- Eliminates evaporation and runoff.
- Requires little to no maintenance.
- Product is 100% natural, non toxic and harmless to people and animals.
- Best used within one year of the manufacturing date on top of the package

### MODELS

RB-IS 2" Gel Pack: 30-day Gel Pack

RB-IS 3" Gel Pack: 90-day Gel Pack

RB-IS TC : Perforated tube and cap

*Note: Rain Bird Irrigation Supplement is not a synthetic polymer, or super absorbent. Rain Bird Irrigation Supplement is water!*

Adjust the number of Gel Packs in function of temperature, sun exposure, size of the plant, plant water needs (low, medium, high)".

### PERFORMANCE

- Use the above chart as a guide only.
- The recommended quantities in the charts " General use guide for 30 day Gel Pack ( RB-IS 2" Gel Pack ) " or " General use guide for 90 day Gel Pack ( RB-IS 3" Gel Pack ) correspond to a size of a plant proportional to a pot size (small plant in a small pot). In the case of plants in pots and/or hanging baskets, you may have one 2" Gel Pack per plant (for plant size inferior to 25cm). Example : 4 plants in a hanging basket = 4 Gel Packs 2". For larger size you should adjust the gel pack quantity per plant (for plant size



General use guide for 30-day Gel Pack (RB-IS 2" Gel Pack) at 20°C.

PLANT		POT		GEL PACK 2"
Water needs	Plant height	Diameter(cm)	Volume (L)	Nb of gel packs
LOW	< 15 cm	From 11 to 15 cm	< 1.5 L	1
	15 < H < 25 cm	From 15 to 20 cm	1.5 < C < 3 L	2
MEDIUM	< 15 cm	From 11 to 15 cm	< 1.5 L	1
	15 < H < 25 cm	From 15 to 20 cm	1.5 < C < 3 L	3
HIGH	< 15 cm	From 11 to 15 cm	< 1.5 L	2
	15 < H < 25 cm	From 15 to 20 cm	1.5 < C < 3 L	4

Guide for medium water need plants and for plant heights around 20 cm.

PLANT	GARDEN PLANTERS		GEL PACK 2"
Quantity of plants	Length (cm)	Volume (L)	Nb of gel packs
2-3	60	4.5	2-3
3	80	6	3
4	90-100	7-8	4
5	120	9	5

PLANT	HANGING BASKETS		GEL PACK 2"
Quantity of plants	Diameter (cm)	Volume (L)	Nb of gel packs
4	40	5	4
5	50	6	5
7	60	7-5	7
9	70	10	9
10	80	14	10

General use guide for 90-Day Gel Pack (RB-IS 3" Gel Pack)

(at 20°C,) Guide for medium water need plants and for plant heights around 20 cm.

PLANT	GARDEN PLANTERS		GEL PACK 3"
Quantity of plants	Length (cm)	Volume (L)	Nb of gel pack
2	66 x 33.5 x H=40 à 55	100 à 150 L	2
4	100 x 50 x H= 55 à 65	240 à 300 L	4
6-7	135 x 56 x H= 50 à 70	400 à 550 L	6-7
	150 x 50 x H= 50 à 70	350 à 500 L	
8	200 x 68 x H= 55 à 70	700 à 1000 L	8

inferior to 25cm). Example : 4 plants in a hanging basket = 4 Gel Packs 2". For larger size you should adjust the gel pack quantity.

- The rate at which the product liquefies varies based on several factors (temperature & contact area between soil and gel).
- The recommended number of gel pack is based on the average needs of medium water-use plant material:  
- for high water need plants, increase the number of Gel Packs by 50%.

- for low water needs plants, decrease the number of Gel Packs by 50%.
- The amount of product used can also be adjusted from the recommended quantities in extreme wet or dry climatic conditions .  
(for example, multiply by 2 the amount of RB-IS if there are plants in hanging basket exposed to the sun during the summer).
- Excessive, heat, plants in the growth stage or plants with young fruits will require additional water.



**230V CONTROLLERS  
FOR DRIP APPLICATION**

## 230V CONTROLLER SELECTION GUIDE

MODELS	ITC	Image	Ec	ESP Modular	SI-RR+	HP	Dialog+
<b>APPLICATIONS</b>							
Residential	•	•	•	•	•	•	
Municipal turf areas				•	•	•	•
Large turf areas						•	•
Athletic fields				•	•	•	•
<b>FEATURES</b>							
Electromechanical							
Hybrid			•	•		•	
Solid State	•	•			•		•
Battery-powered							
Indoor location	•	•	•			•	•
Outdoor location				•	•	•	•
Can be installed in a valve box							
<b>SPECIFICATIONS</b>							
Stations	2, 4, 6	2, 4, 6	4, 6, 9	4, 7, 10, 13	4, 8, 12	6, 8, 12	8, 16, 24, 32, 40, 48
Programs	2	2	3	3	3	2	3
Station run time in hours (up to)	4	4	4	4	12	2	12
Number of starts per day per program	2	8	4	4	8	8	8
Water Budget	•	•	•	•	•	•	•
Manual ON/OFF	•	•	•	•	•	•	•
Rain Delay					•		•
Simultaneous multi-station operation							
Overlapping programs							
LCD display	•	•	•	•	•	•	•
<b>PROGRAMMING SCHEDULES</b>							
14 Day-of-week							
7 Day-of-week	•	•	•	•	•	•	•
2,3 and 5-day fixed cycle						•	•
1-6 day variable cycle			•	•			
1-31 day variable cycle							
1-99 day variable cycle			•	•			
Odd/even cycle			•	•			
365-day calendar				•			
Test program	•		•	•			
Pre-programmed cycles				•	•		
Pre-programmed run times				•			
Default program after power outage	•	•	•	•	•	•	•
Station valve capacity	1+1	1+1	1+1	2+1	2+1	2+1	3+1
<b>CENTRAL CONTROL COMPATIBILITY</b>							
Central Control Compatibility					•		•
<b>CABINET</b>							
Plastic-indoor	•	•	•				
Plastic-outdoor				•	•	•	•
IP68							
Stainless Steel pedestal option							
<b>ACCESSORIES</b>							
RAIN CHECK™ Shutoff Device	•	•	•		•	•	•
RSD-BEx Rain Sensor	•	•	•	•	•		•





## BATTERY-POWERED CONTROLLER SELECTION GUIDE

MODELS	WTA 2875	WTD 2900	Easy Rain™	WP1	WP	TBOS™
<b>APPLICATIONS</b>						
Residential	•	•	•	•	•	•
Municipal turf areas			•	•	•	•
Large turf areas						•
Athletic fields						
<b>FEATURES</b>						
Electromechanical						
Hybrid			•			
Solid State				•	•	•
Battery-powered	•	•	•	•	•	•
Indoor location			•	•	•	•
Outdoor location	•	•	•	•	•	•
Can be installed in a valve box			•	•	•	•
<b>SPECIFICATIONS</b>						
Stations	1	1	1	1	2, 4, 6, 8	1, 2, 4, 6
Programs	1	8	1	1	3	3
Station run time in hours (up to)	2	24	1h30	12	12	12
Number of starts per day per program	3	6	2	8	8	8
Water Budget				•	•	
Manual ON/OFF	•	•	•	•	•	•
Rain Delay				•	•	
Simultaneous multi-station operation						•
Overlapping programs						•
LCD display		•		•	•	•
<b>PROGRAMMING SCHEDULES</b>						
7 Day-of-week		•		•	•	•
Every 2, 3 or 7 days	•					
Every 3, 4, 5, 6, 7 days		•				
1-15 day variable cycle				•		
Odd/even cycle		•		•		
365-day calendar				•		
Test program					•	
Pre-programmed cycles			6			
Pre-programmed run times			7			
Default program after power outage						
Station valve capacity	1	1	1	1	1+1	1
<b>CENTRAL CONTROL COMPATIBILITY</b>						
Central Control Compatibility						•
<b>CABINET</b>						
Plastic-outdoor	•	•	•	•	•	•
IP 68			•	•	•	•
Stainless Steel pedestal option						
<b>ACCESSORIES</b>						
RAIN CHECK™ Shutoff Device						
RSD-BEx Rain Sensor				•	•	•





The  
Intelligent  
Use of Water™

At Rain Bird®, we believe it is our responsibility to develop products and technologies that use water efficiently. Our commitment also extends to education, training and services for our industry and our communities.

The need to conserve water has never been greater. We want to do even more, and with your help, we can. Visit [www.rainbird.fr](http://www.rainbird.fr) for more information about The Intelligent Use of Water.™



**Rain Bird Europe S.A.R.L.**  
900, rue Ampère, B.P. 72000  
13792 Aix en Provence Cedex 3  
FRANCE  
Tel: (33) 4 42 24 44 61  
Fax: (33) 4 42 24 24 72  
[rbe@rainbird.fr](mailto:rbe@rainbird.fr)

**Rain Bird France S.A.R.L.**  
900, rue Ampère, B.P. 72000  
13792 Aix en Provence Cedex 3  
FRANCE  
Tel: (33) 4 42 24 44 61  
Fax: (33) 4 42 24 24 72  
[rbe@rainbird.fr](mailto:rbe@rainbird.fr)

**Rain Bird Turkey**  
İstiklal Mahallesi,  
Alemdag Caddesi, N° 262  
81240 Ümraniye İstanbul  
TURKEY  
Tel: (90) 216 443 75 23  
Fax: (90) 216 461 74 52  
[rbt@rainbird.fr](mailto:rbt@rainbird.fr)

**Rain Bird Iberica S.A.**  
Poligono Ind.Prado del Espino  
C/Forjadores-Parcela 6 - M18, S1  
28660 Boadilla Del Monte Madrid  
ESPAÑA  
Tel: (34) 916 324 810  
Fax: (34) 916 324 645  
[rbib@rainbird.fr](mailto:rbib@rainbird.fr)

**Rain Bird Deutschland GmbH**  
Siedlerstraße 46  
71126 Gäufelden -Nebringen  
DEUTSCHLAND  
Tel: (49) 07032 9901 0  
Fax: (49) 07032 9901 11  
[rbd@rainbird.fr](mailto:rbd@rainbird.fr)

**Rain Bird Sverige AB**  
Fleningevägen 315  
260 35 Ödåkra  
SWEDEN  
Tel: (46) 42 25 04 80  
Fax : (46) 42 20 40 65  
[rbs@rainbird.fr](mailto:rbs@rainbird.fr)